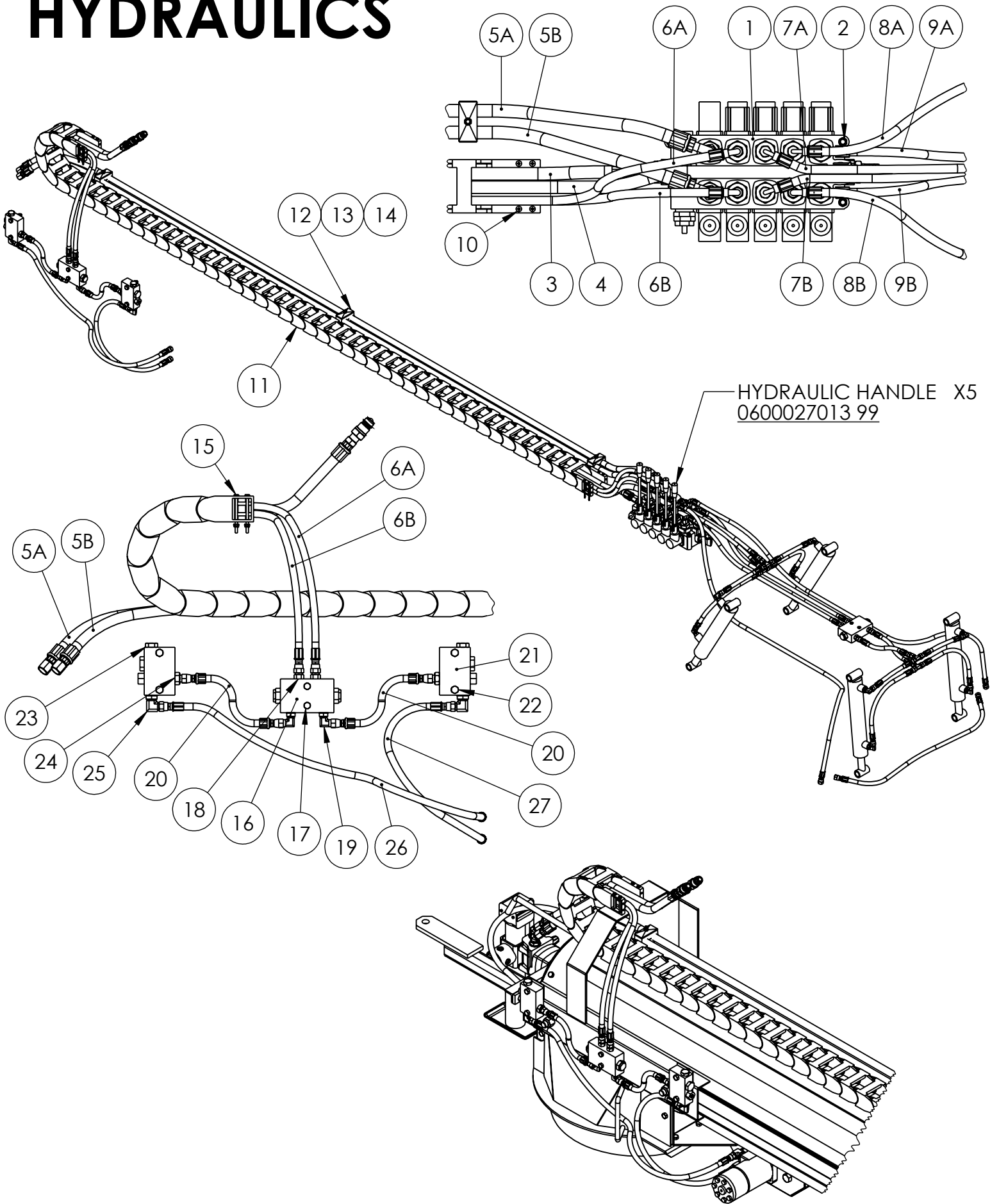
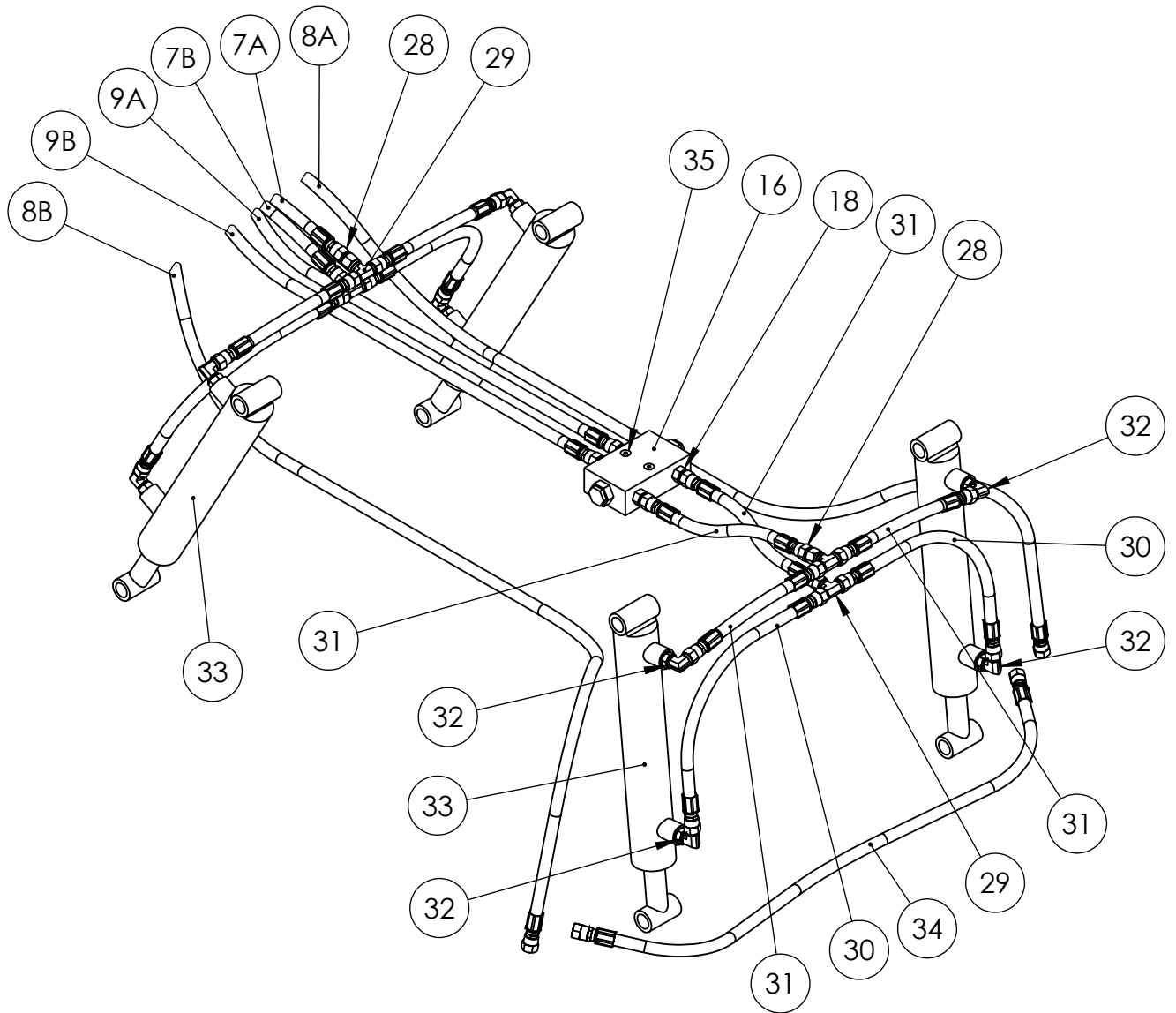


HYDRAULICS



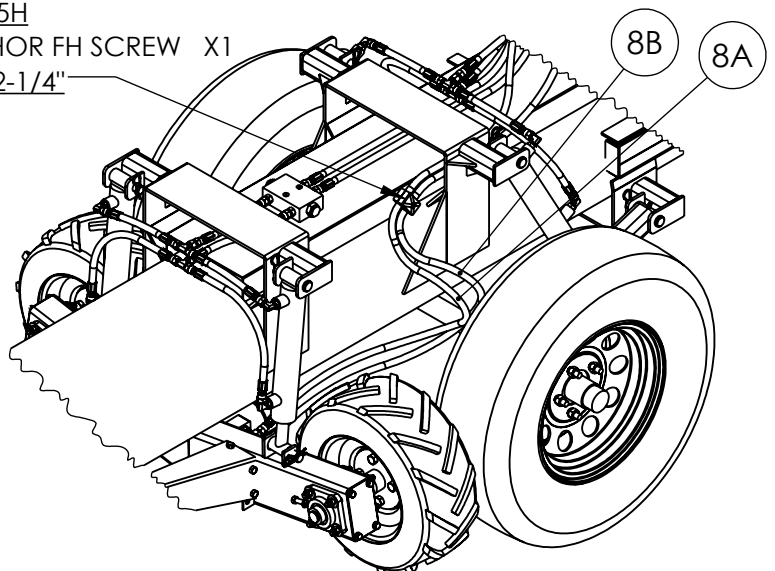
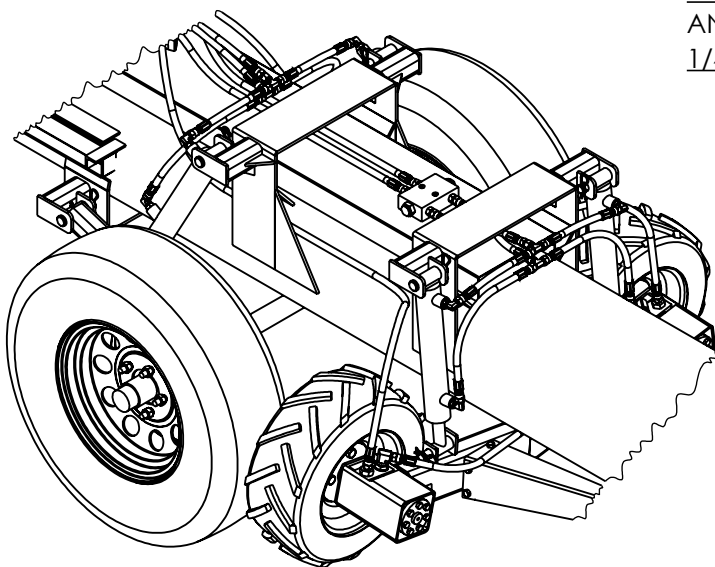
HYDRAULICS



SWING DRIVE
DUAL MOTOR

- HYD CLAMP CAP X1
- CPT2
- HYD CLAMP X2
- AT2-15H
- ANCHOR FH SCREW X1
- 1/4"X2-1/4"

SWING DRIVE
CHAIN DRIVE



HYDRAULICS

ITEM#	QTY	PART#	DESCRIPTION
1	1	Q95/5E-F1SN-1X111/A1/R3-3X103/A1	5 BANK HYDRAULIC VALVE
2	3		5/16" NYLOCK NUT
3	1	EC215-08-240 8FJ X 8MP	TRACTOR HOSE STRAIGHT CONNECTION
4	1	EC215-08-256 8FJ90 X 8MP	TRACTOR HOSE 90° CONNECTION
5	2	EC215-08-133 8FJ X 8FJ90	AUGER MOTOR HOSE (A&B ARE SAME)
6	2	EC215-04-158 6FJ X 6FJ90LONG	SLIDE HOSE (A&B ARE SAME)
7	2	EC215-04-20 6FJ X 6FJ90	TRANSPORT CYLINDER HOSE (A&B ARE SAME)
8A	1	EC215-04-64 6FJ X 6FJ90	SWING DRIVE MOTOR HOSE MOUNTED ON RESTRICTOR - PART#28
8B	1	EC215-04-64 6FJ X 6FJ90 LONG	SWING DRIVE MOTOR HOSE
9	2	EC215-04-32 6FJ X 6FJ90	SWING DRIVE CYLINDER HOSE (A&B ARE SAME)
10	4		3/16" X 3-1/4" ANCHOR FLAT HEAD SCREW
11	1	0322-30-062-100 -0-0-03040	HOSE CARRIER
12	3		1/4" NYLOCK NUT
13	3	CPT3	HYDRAULIC 1/2" HOSE CLAMP CAP
14	6	AT3-22H	HYDRAULIC 1/2" HOSE CLAMP
15	4		10-24 X 3" MACHINE SCREW & NYLOCK NUT
16	2	FPDLSAE6HYS	DUAL CHECK VALVE
17	2		5/16" X 2" BOLT & NYLOCK NUT
18	6	S3648-6	HYDRAULIC ADAPTOR
19	2	S3649-6	90° HYDRAULIC ADAPTOR
20	2	EC215-04-08 6FJ X 6FJ	SLIDE VALVE HOSE
21	2	8124SHO	HYDRAULIC RELIEF VALVE
22	4		3/8" X 2" BOLT & NYLOCK NUT
23	2	S3621-8	HYDRAULIC PLUG
24	2	S3648-68	HYDRAULIC ADAPTOR
25	2	S3649-68	90° HYDRAULIC ADAPTOR
26	1	EC215-04-33 6FJ X 6FJ	SLIDE DRIVE HOSE LONG
27	1	EC215-04-22 6FJ X 6FJ	SLIDE DRIVE HOSE SHORT
28	3	FF1981-031-0606	HYDRAULIC RESTRICTOR
29	4	S3744-6	HYDRAULIC T ADAPTOR
30	4	EC215-04-13 6FJ X 6FJ	LONG CYLINDER HOSE (TRANSPORT AND SWING ARE THE SAME)
31	6	EC215-04-07 6FJ X 6FJ	SHORT CYLINDER HOSE (TRANSPORT AND SWING ARE THE SAME)
32	8	3649-6	90° HYDRAULIC ADAPTOR FOR CYLINDER
33	4	15MAL 08 10	HYDRAULIC CYLINDER
34	1	EC215-04-35 6FJ X 6FJ	SWING DRIVE DUAL MOTOR HOSE
35	2		1/4" X 2-1/4" ANCHOR FLAT HEAD SCREW